

STATE STREET CORRIDOR

SIDE PATH

February 27, 2017

BROWNING
DAY MULLINS
DIERDORF

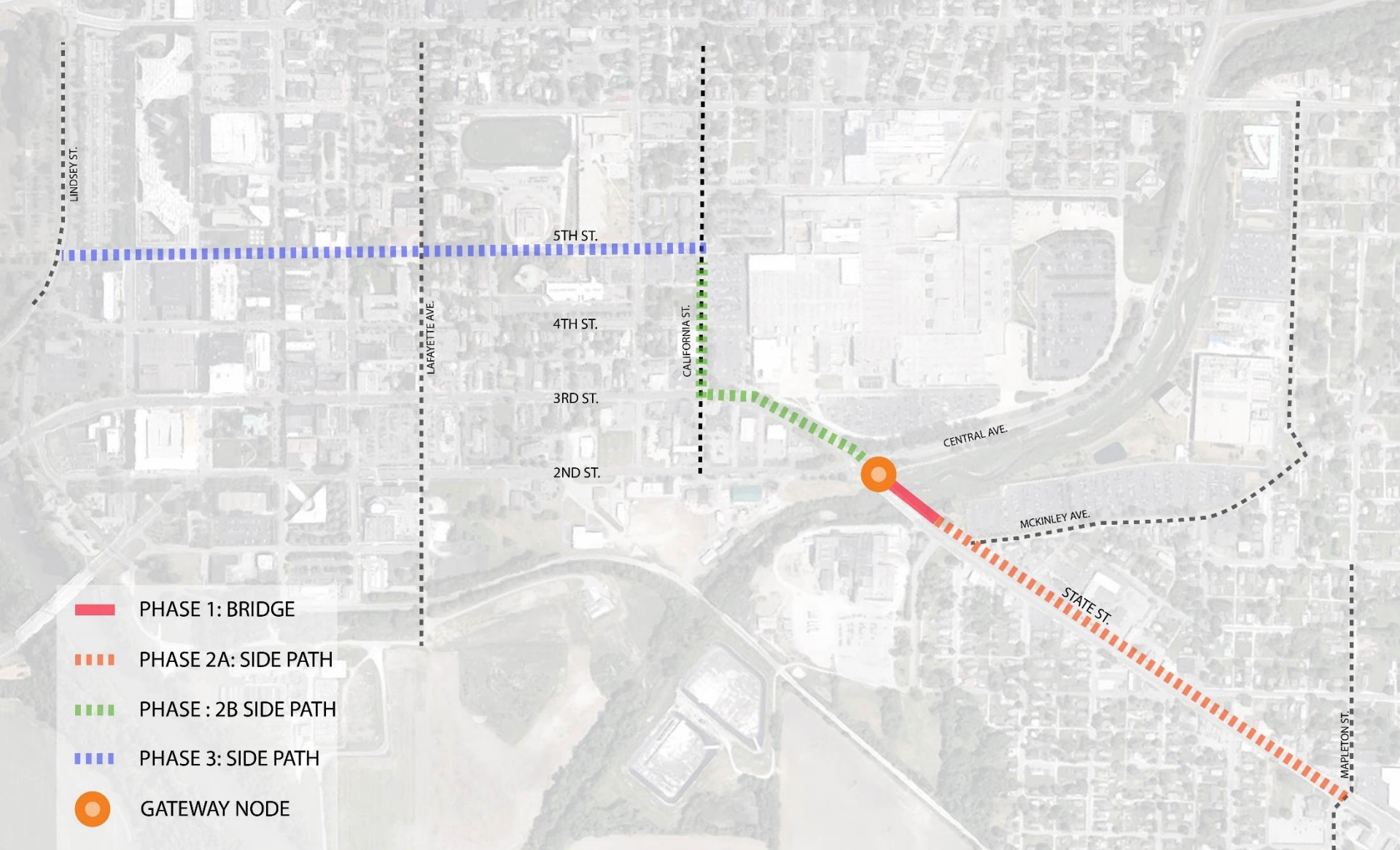


WRIGHT

-WELMER

"DRIVE-IN" FILLING STA

FIFTH AND JACKSON STREETS



Project Overview

BROWNING
DAY MULLINS
DIERDORF



LEADERSHIP + DESIGN®

March 12, 2015

UNITED Contract Executed

May 12, 2015

Project Kickoff Meeting

May 16, 2016

CRC Approves Phase 1 Funding

October 4, 2016

Bids Opened for Phase 1

October 20, 2016

Notice to Proceed Phase

May 26, 2017

Completion date Phase 1

Phase 1 – Haw Creek Bridge



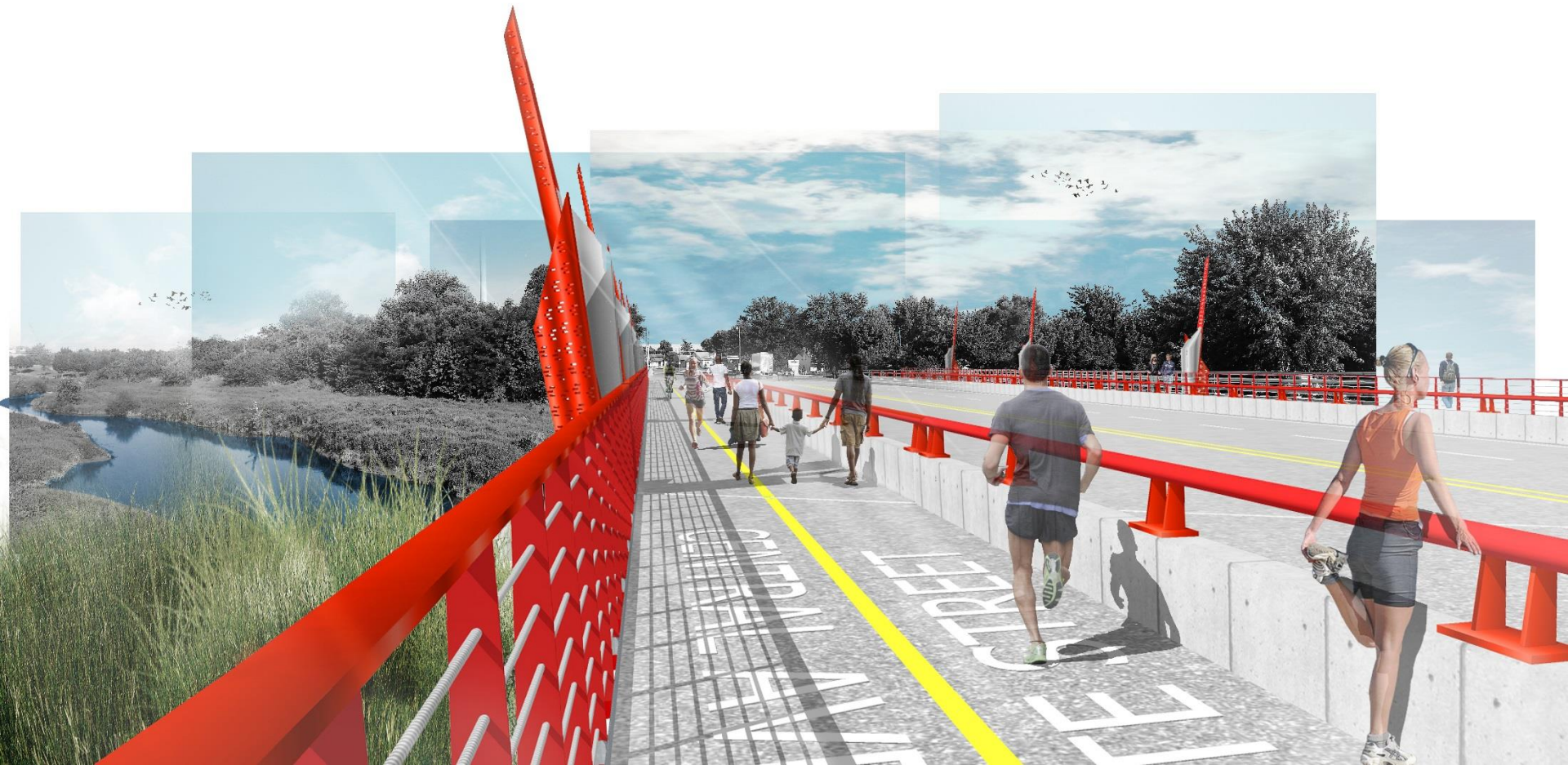
Proposed Design

- Connects side path to People Trails along Haw Creek
- Plaza spaces with brick paving formed as 'Gears' to reflect industrial arts
- Railing at plaza; complements bridge railing
- Trees provides an 'outdoor' room under tree canopy and human scale to busy and wide intersection
- Bench seating
- Opportunity for sculpture placement (future)
- Up lighting for trees

Phase 1, Gateway Nodes



Phase 1, Haw Creek Bridge - Before

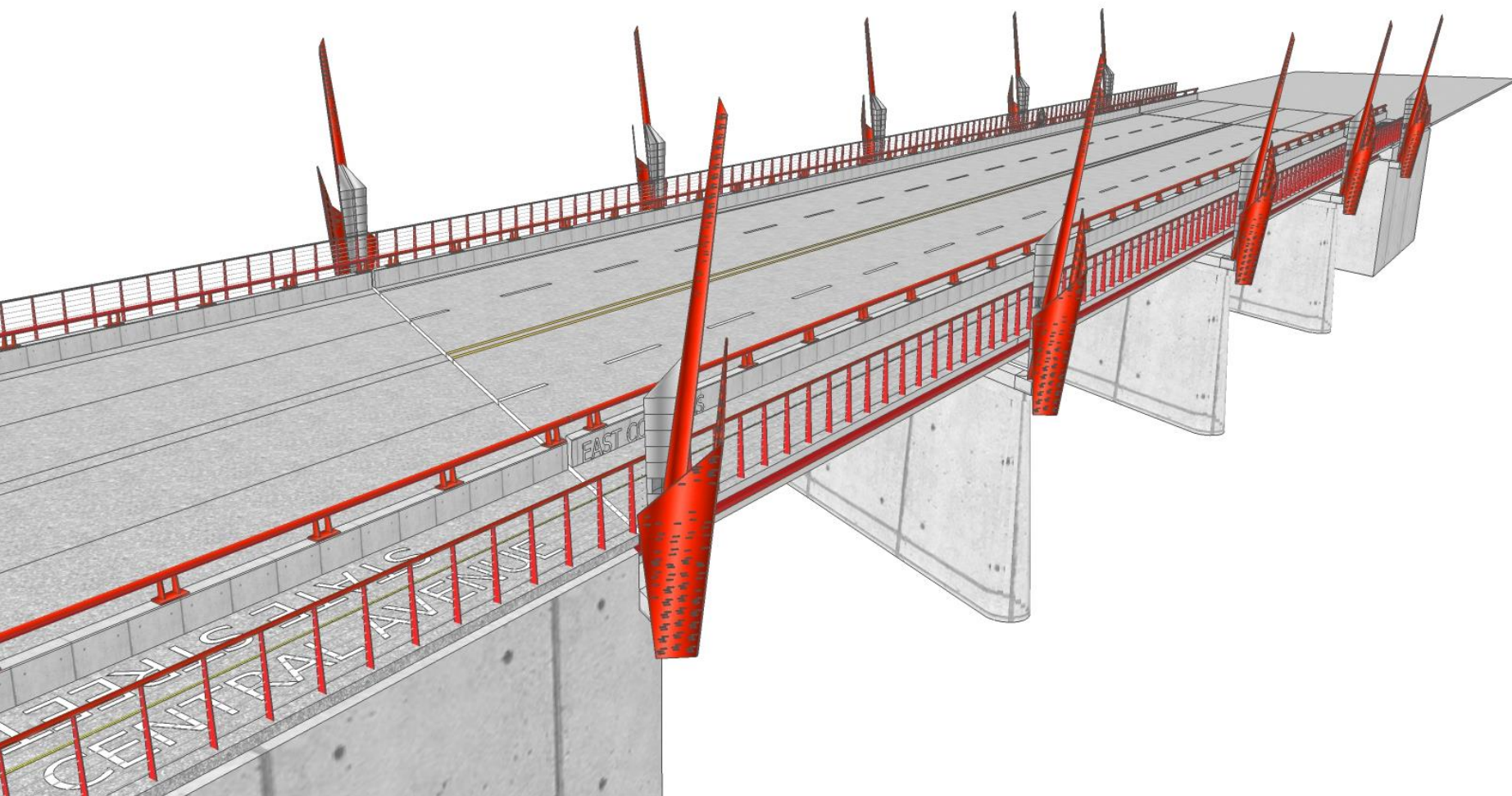


Phase 1, Haw Creek Bridge - Concept

BROWNING
DAY MULLINS
DIERDORF



LEADERSHIP + DESIGN®



Phase 1, Haw Creek Bridge - Concept

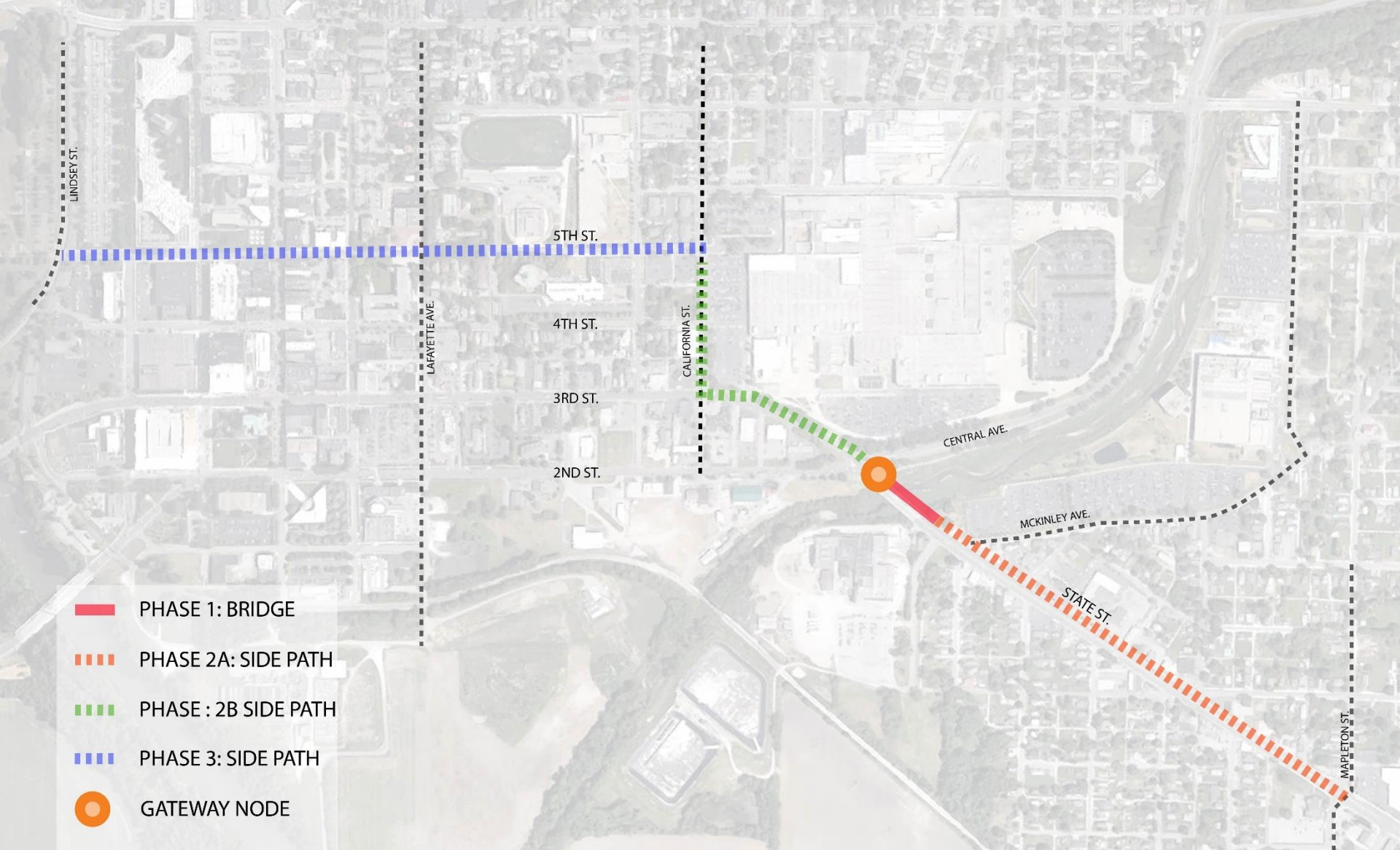


Phase 1, Construction Photos

BROWNING
DAY MULLINS
DIERDORF



LEADERSHIP + DESIGN®



Project Overview

BROWNING
DAY MULLINS
DIERDORF



LEADERSHIP + DESIGN®



Proposed Design

- Sculptural 'wave' element provides interest, separation
- Lower maintenance planting to intermingle with sculptural element. Offers winter interest and visual separation
- Trees offer shade scale (coordinate w/prop. Owners)

- 8' Wide concrete side path
- Decorative brick paving strip 'shy zone' next to curb
- Industrial arts-inspired lights with color accents
- Decorative crosswalk in collaboration with Ivy Tech

State Street – Concept



Existing Parameters / Constraints

- Existing Ash tree
- Turf lawn, slopes to the southwest
- Pole with cobra head light fixture
- Adjacent private residence
- 5' Sidewalk at curb

Green Space at Stadler Drive - Before



Proposed Design

- Passive neighborhood green space, circulation and seating.
- Modern design features clean lines, simple ground plane
- Low site wall creates a level green space.
- Brick sidewalk through space
- Crushed stone paving under grove of shade trees
- 'Puzzle Benches' – statement design, not skate friendly
- Strategic use of plant material to screen adjacent properties
- Save existing tree – Immunize in the spring for Emerald Ash Borer
- Decorative crosswalk in collaboration with Ivy Tech
- Water hose bib for maintenance, lockable

Stadler Dr. Green Space - Concept



Proposed Design

- Passive neighborhood green space, circulation and seating.
- Contemporary design featuring lower maintenance materials.
- Brick paving, crushed stone paving, concrete walks, large river stone, defined planting areas
- Landscape plants to screen views, provide shade, seasonal interest
- 'Puzzle Benches' – statement design, not skate friendly
- Water hose bib for maintenance, lockable

Indiana Ave. Green Space – Concept



Materials

BROWNING
DAY MULLINS
DIERDORF



LEADERSHIP + DESIGN®

Phase 1



\$2,185,000

Phase 2A



\$2,600,000

Construction Budget Summary

Phase 2 Schedule & Next Steps

- » March 21, 2017 100% Plans, Specs
- » March 2017 Bid Advertisement
- » April 2017 Bid Opening
- » Fall/Winter 2017 Construction Complete

STATE STREET CORRIDOR

SIDE PATH

February 27, 2017

BROWNING
DAY MULLINS
DIERDORF

